

JOHNSTONE PEAK COMMUNICATIONS SITE MANAGEMENT PLAN



**JOHNSTONE PEAK COMMUNICATIONS
SITE MANAGEMENT PLAN**

**ANGELES NATIONAL FOREST
SAN GABRIEL RIVER RANGER DISTRICT**

Submitted By: _____
District Ranger

Date

Approved By: _____
Forest Supervisor

Date

JOHNSTONE PEAK COMMUNICATIONS SITE MANAGEMENT PLAN

Table of Contents

I.	DEFINITIONS	3
II.	NARRATIVE	4
	A. Site Description.....	4
	B. Existing Site Development	4
	C. Objectives.....	5
III.	AUTHORITY AND JURISDICTION	6
	A. Authority	6
	B. Jurisdiction.....	6
IV.	RIGHTS AND RESPONSIBILITIES.....	6
	A. The Forest Service	6
	B. Facility Owners and Facility Managers	7
	C. Tenants and Customers	8
V.	USE OF THE SITE.....	8
	A. Multiple-Use Facilities.....	8
VI.	RENTAL FEES	8
VII.	CONDITIONS FOR NEW CONSTRUCTION AND MODIFICATION OR EXPANSION OF A FACILITY	9
	A. New Construction, Modification, and Expansion Responsibilities	9
	B. Construction Methods and Resource Protection.....	10
	C. Construction Inspection	11
	D. New or Remodeled or Expanded Buildings.....	12
	E. New or Remodeled/Expanded Towers	13
VIII.	GENERAL OPERATION AND MAINTENANCE	13
	A. Special Environmental and/or Biological Considerations	13
	B. Wiring and Grounding	15
	C. Communications Equipment.....	15
	D. Cables and Transmission Lines	18
	E. Radiation	18
	F. Utilities.....	19
	G. Sanitary Facilities.....	19
	H. Security and Law Enforcement.....	19
	I. Site Maintenance.....	20
	J. Inspections	21
	K. Fire Prevention and Hazard Reduction Requirements.....	21
	L. Access	22
IX.	SITE ASSOCIATION AND ADVISORY GROUP.....	23
X.	APPENDICIES	24
	APPENDIX A – Site Map	24
	APPENDIX B – Authorized Facilities	25
	APPENDIX C – Facility Photographs.....	27
	APPENDIX D – Inspection Checklist	40
	APPENDIX E – Fire Plan.....	41

JOHNSTONE PEAK COMMUNICATIONS SITE MANAGEMENT PLAN

I. DEFINITIONS

Authorized Officer. The Forest Service employee with the delegated authority to issue and manage communications uses. The authorized officer is usually the District Ranger or Forest Supervisor of the unit on which the communications site is located.

Co-location. Installation of telecommunications equipment in or on an existing communications facility or other structure.

Communications Site. An area of National Forest System (NFS) lands designated through the Forest Land and Resource Management planning process for telecommunications uses. A communications site may be limited to a single communications facility, but most often encompasses more than one. Each site is identified by name, usually denoting a local prominent landmark, such as Bald Mountain Communications Site.

Customer. An individual, business, organization, or agency that is paying a facility owner or tenant for communications services and is not re-selling communications services to others. Private ("other communications use" category) and internal (private mobile radio service and non-commercial microwave categories) communications uses leasing space in a building and not re-selling communications services to others are considered customers for rental calculation purposes.

Facility. A building, tower, or other physical improvement (buildings and towers do not have to be combined to be considered a facility) that is built or installed to house and support authorized communications equipment.

Facility Manager. The holder of a Forest Service communications use authorization who (1) owns a communications facility on NFS lands, (2) rents space in or on their facility to other communication users, but (3) does not own or operate their own communications equipment and they do not directly provide communications services to third parties. Persons or entities that manage or administer a communications facility on NFS lands for a facility owner or a facility manager are not facility managers for purposes of this communications site plan.

Facility Owner. The holder of a Forest Service communications use authorization who: (1) owns a communications facility on NFS lands, (2) may or may not be renting space or equipment to other communications users in or on their facility, and (3) owns and operates their own communications equipment in their facility.

Multiple-Use Facility. A communications site facility that has multiple communications uses operated directly by the facility owner or has customers or tenants in or on that facility.

JOHNSTONE PEAK COMMUNICATIONS SITE MANAGEMENT PLAN

Ranally Metro Area. Geographic areas in the United States identified by Rand McNally in its Commercial Atlas and Marketing Guide that define population centers of 50,000 or more. There are approximately 450 Ranally Metro Areas (RMAs) in the United States.

Senior Use. A communications use that predates another communications use. The most senior use or uses form the basis for the communications site designation.

Single-Use Facility. A communications site facility that contains only the single communications use of the facility owner and no tenants or customers in or on the facility.

Tenant. A communications user who rents space in a communications facility and operates communications equipment for the purpose of re-selling communications services to others for profit. Tenants may hold separate authorizations, without sub-tenancy rights, at the full schedule rent based on the category of use.

II. NARRATIVE

A. Site Description

The Johnstone Peak Communications Site is located on the San Gabriel River Ranger District of the Angeles National Forest, Los Angeles County, California; T. 1 N., R. 9 W., Section 23; Latitude 34° 09' North, Longitude 117° 48' West. The site elevation is 3201 feet. This site is within the San Dimas Experimental Forest and therefore public access is limited.

B. Existing Site Development

This Communications Site Management Plan has been developed to document and evaluate the existing communications facilities at the Johnstone Peak Communications Site and to provide the outline for any future development of the site in an orderly manner and in accordance with the Angeles National Forest Land and Resource Management Plan.

The Johnstone Peak Communications Site is located on the front slopes of the San Gabriel Mountains approximately 3 miles north of San Dimas. This site provides excellent command of the eastern portion of the Los Angeles Basin.

The site was initially developed to meet the needs of public agency and utility companies in the early 1960's. The highest bench is reserved for these uses. The middle bench is designated for commercial uses and was first occupied in the late 1960's. Three facilities currently occupy this zone providing commercial two-way, paging, cable TV, and FM radio uses. The lowest zone is set aside for amateur users. Two facilities provide space for these uses. The saddle just north of the Commercial Zone contains the satellite receiving antenna.

JOHNSTONE PEAK COMMUNICATIONS SITE MANAGEMENT PLAN

(SEE APPENDIX B FOR A CURRENT LIST OF AUTHORIZED FACILITIES)

C. Objectives

The primary objectives of the Johnstone Peak Communications Site Management Plan are to:

1. Document current policies, procedures, and standards used to administer the Johnstone Peak Communications Site.
2. Manage Johnstone Peak as a multiple use low power broadcast and non-broadcast site. Manage Johnstone Peak into three defined use areas, Amateur, Commercial-satellite receiving, and Public Service Zone.
3. Accommodate the optimum/maximum use of the site by compatible communications uses consistent with Forest Land and Resource Management Plans, contiguous National Forest uses, natural resource management and objectives, good communications management practices, and public needs.
4. Encourage current leaseholders to organize into a Johnstone Peak Users Association to address site management and site maintenance issues, vegetation management, road maintenance, potential new facility accommodation, RFR hazard management, site security, etc.
5. The Forest Land and Resources Management Plan has identified a SIO of “High” be ultimately achieved at Sunset Ridge. In order to minimize the visual impact from the valley below, plans and applications for building and tower modifications/reconstruction or new construction must include assurances that visual quality considerations have been thoroughly analyzed. Wherever possible, negative visual impacts should be avoided or at least minimized and potential opportunities for visual enhancement incorporated into the design. Careful consideration must be given to building and tower siting, use of land form and existing vegetation for visual screening, configuration, line, exterior color, and texture of facilities, and the overall concept of efficient land use through building consolidation and shared use of towers. Any future proposed expansion of facilities into presently undeveloped areas must be planned in a like manner.
6. The overall appearance of the site and the integrity of the natural environmental shall be improved through stringent maintenance requirements, consolidation of fuel containment systems, and selection of authorized paint colors.
7. All facilities shall be managed to reduce the impacts on other resources as specifically identified in the Forest Land and Resource Management Plan or other applicable NEPA analysis and resulting decisions.

JOHNSTONE PEAK COMMUNICATIONS SITE MANAGEMENT PLAN

III. AUTHORITY AND JURISDICTION

A. Authority

Forest Service authority to authorize and manage communications uses on National Forest System lands derives from the Federal Land Policy and Management Act of 1976 (43 U.S.C. 1761-1771); Title 36, Code of Federal Regulations, part 251, subpart B (36 CFR 251, subpart B); Forest Service Manual (FSM) 2700 and FSM 6600; Forest Service Handbook (FSH) 2709.11, chapter 90, and FSH 6609.14.

B. Jurisdiction

The Forest Service has jurisdiction over the use and occupancy of National Forest System (NFS) lands for communications purposes under the National Forest Management Act (NFMA) of 1976 (16 U.S.C. 1600 et seq.); the Federal Land Policy and Management Act (FLPMA) of 1976 (43 U.S.C. 1701 et seq.), and Title 36, Code of Federal Regulations, part 251, Subpart B (36 CFR part 251, subpart B).

The Federal Communications Commission (FCC) has jurisdiction over the use of non-Federal channels of radio and television transmission under licenses granted by the FCC. The National Telecommunications and Information Administration (NTIA) has jurisdiction over the use of Federal channels of radio transmission under authorizations granted by the NTIA.

The issuance of an FCC license or NTIA authorization does not authorize the use and occupancy of NFS lands. A Forest Service special use authorization is required for the use and occupancy of NFS lands for communications purposes.

The Forest Service has jurisdiction over resolution of conflicts associated with the use and occupancy of NFS lands, such as those involving location and re-radiation. The FCC and NTIA are not responsible for resolving occupancy conflicts associated with the use and occupancy of NFS lands or the resolution of other conflicts when entities are operating within the limits of their FCC license or NTIA authorization. However, the FCC or the NTIA may be useful in assisting in the resolution of interference problems or other frequency conflicts.

IV. RIGHTS AND RESPONSIBILITIES

A. The Forest Service reserves the right to:

1. Amend or modify this site plan as deemed appropriate.
2. Approve new facilities including common use of a lease holder's authorized area.
3. Approve assignment of a communications site lease.

JOHNSTONE PEAK COMMUNICATIONS SITE MANAGEMENT PLAN**B. Facility Owners and Facility Managers are responsible for:**

1. Complying with the terms and conditions of their communications site authorization and this site plan.
2. Ensuring that all new facilities, expansions, or improvements are consistent with the Angeles National Forest Land and Resource Management Plan, environmental documentation and decisions affecting the use of this site, and the provisions of this site plan.
3. Renting building and tower space to tenants and customers without prior written approval from the Forest Service as long as that tenant or customer use is an approved communications use in this site plan and does not interfere with other existing uses at the site.
4. Ensuring that no unreasonable restrictions on potential or existing tenants and customers are imposed.
5. Ensuring that facilities and equipment not complying with Federal, State, and local laws, regulations, and ordinances will be removed or modified within one year of approval of this site plan. Modifications require the pre-approval of the authorized officer.
6. Keeping all facilities within the established limits of their authorized area. The facility owner or manager may not authorize itself or any customer or tenant the right to construct any equipment shelter or tower without specific authorization from the Forest Service.
7. Providing the authorized officer the name, address, and telephone number of a local contact. The facility owner or the facility manager and the local contact person may be the same individual. The local contact shall be available for emergencies and shall have the authority to make decisions about construction issues, facility maintenance, and all equipment within the facility.
8. Ensuring that all communications equipment in their facility is properly installed, operated, and maintained in accordance with ANSI, FCC, and Forest Service regulations, guidelines and standards concerning radiation limitations, including monitoring radiation levels at their facility and immediately correcting any radiation levels that are, or could be a hazard to human health.
9. Providing the authorized officer by October 15th of each year, a certified statement listing the type or types of communications uses they provide and the business names of all occupants and their type of communication use in the facility on September 30th of that year.

JOHNSTONE PEAK COMMUNICATIONS SITE MANAGEMENT PLAN

10. Treating and controlling noxious weeds on and adjacent to their permitted area, access, and parking areas. Treatment requirements and standards must be according to applicable regulations. Standards and application procedures may be obtained from the Forest Office.

C. Tenants and Customers:

May co-locate in an existing facility when their communications use is an approved use in the site plan. Co-location in a non-Federal communications facility does not require a Forest Service authorization. Tenants and customers who co-locate in a Federal facility shall first be issued a special use permit from the authorized officer before locating in that Federal facility.

V. USE OF THE SITE

A. Multiple-Use Facilities

Co-location, when practical, shall be required. Site applicants shall take the lead in this area and shall design their proposals to accommodate multiple uses of facilities and improvements. This includes multiple-use of buildings, towers, solar generating systems, back-up generators, grounding systems, fuel containers, access ways, and parking areas.

Due to the limited developable space at the site, new facilities, or major modifications to existing facilities, shall be designed to accommodate additional users even if other users are, or could be, competitors.

Facility owners and facility managers are not required to lease facility space to others if they can demonstrate to the authorized officer that:

1. Space is not available;
2. The use is incompatible with the existing communications uses at the site. For example, the proposed use is not compatible with other uses as provided for in FSH 2709.11, section 97, exhibit 05;
3. Additional space is needed by the facility owner or the facility manager; or
4. Additional users would compromise security of the facility or communications systems located in that facility.

VI. RENTAL FEES

Unless specified differently in the communications site lease, the Forest Service shall charge facility owners and facility managers of non-Federal facilities and tenants and customers in Federal facilities an annual rental fee based on the fee schedule for communications uses on National Forest System lands contained in FSH 2709.11, section

JOHNSTONE PEAK COMMUNICATIONS SITE MANAGEMENT PLAN

95. The rental rates shall be adjusted annually using the Consumer Price Index-Urban (CPI-U), and the population figures are adjusted annually based on the most recent Rand McNally Commercial Atlas and Marking Guide (for RMAs) and Rand McNally Road Atlas for non-RMA communities.

This site serves the Los Angeles Ranally Metro Area (RMA). The population of the RMA is defined in the Rand McNally Commercial and Marketing Atlas 2005 edition. The population identified for this area is updated annually by the Forest Service, Washington Office, Director of Lands, and is used to determine the annual rental fee due the Forest Service. Zone #1 in the national communication fee schedule will be used for fee calculation purposes for this site.

Rental fees that facility owners and facility managers may charge their tenants and customers shall be:

1. Reasonable and commensurate with the use and occupancy of the facilities and services provide to tenants and customers; and
2. Consistent with other fees charged for similar facilities.

VII. CONDITIONS FOR NEW CONSTRUCTION AND MODIFICATION OR EXPANSION OF A FACILITY

A. New Construction, Modification, and Expansion Responsibilities

In addition to the responsibilities listed in Section IV, proponents, facility owners, and facility managers seeking to construct a new facility or modify or expand an existing facility are responsible for:

1. Submitting a complete application to the authorized officer prior to any new construction, modification, or expansion of a facility. The application shall include:
 - a. A copy of the approved site plan base map showing all of the proposed new, modified, or expanded facilities, including structures, towers, and auxiliary equipment;
 - b. Completed drawings or plans prepared by a professional engineer or architect;
 - c. Identification of any proposed microwave beam paths, a plot of their azimuth, and their proposed elevation on the tower; and
 - d. Documentation showing that the proposed facilities will not obstruct or interfere with any exiting uses, including fixed point-to-point antennas, omni-directional broadcast antennas, or microwave beam paths.

JOHNSTONE PEAK COMMUNICATIONS SITE MANAGEMENT PLAN

2. Demonstrating that the new facility will make the most efficient use of the limited amount of space at the site and will provide for future uses without additional construction.
3. Providing engineering and geotechnical investigations for development of specific foundation designs and grading plans.
4. Providing an erosion control plan prior to construction. At a minimum, the erosion control plan shall include sediment control, stipulations that cut and fill slopes will be graded and contoured to prevent erosion and excessive runoff, and recommendations for temporary erosion control measures, such as netting, silt fences, swales, sediment collection areas, and so forth.
5. Coordinating with other Federal and local governments and securing all pertinent permits and approvals from those agencies.
6. Providing 30-days notice to all facility owners and facility managers at the site, as well as the Forest Service, of all new frequencies, either for themselves or their tenants and customers, proposed for the site. A completed FS-2700-10 shall be sent with the 30-day notice to allow for comment of potential interference. This would be for new frequencies for themselves and their tenants.

B. Construction Methods and Resource Protection

Plans submitted by a proponent, facility owner, or a facility manager for construction, modification, or expansion of a facility shall provide for soil rehabilitation measures, including soil replacement and stabilization and proper handling of runoff from buildings, parking areas, access roads, and undeveloped common areas. The authorized officer must approve all cutting or trimming of vegetation.

During construction, modification, or expansion of facilities, facility owners and facility managers shall:

1. Identify, avoid, and protect sensitive resource areas identified by the Forest Service.
2. Comply with the erosion control plan.
3. Notify the Forest Service authorized officer prior to any ground-disturbing activities.
4. Not clean paintbrushes off on rocks during construction and or maintenance. No marks of any kind, including survey marks, will be permitted on rocks.

JOHNSTONE PEAK COMMUNICATIONS SITE MANAGEMENT PLAN

5. Minimize, to the greatest extent possible, ground disturbance and vegetation removal.
6. Re-vegetate extensive cut and fill slopes with native vegetation as soon as possible after construction. All re-vegetation must have prior written approval of the authorized officer.
7. Not cast off grading material. Excess soil can be used as fill material for roads, buildings and towers.
8. Obtain prior written approval of the authorized officer for temporary, on-site storage of construction materials.
9. Not leave hazardous materials, including fuels, oils, and lubricants unattended at the site at any time. Hazardous materials shall be removed from the site at the end of each workday or temporarily stored inside a locked and posted building until the following workday. Construction materials and supplies other than hazardous materials may be left unattended at the construction site at the end of each workday at the owner's risk.
10. Remove surplus construction materials and waste debris from the site no later than 30 days after construction has been completed.
11. To prevent the spread of noxious weeds into the area, power wash off any earth-moving or heavy equipment, such as dozers, graders, cranes, backhoes, and so forth before it is brought onto National Forest System lands.

C. Construction Inspection

1. All new construction, modification, and expansion of facilities shall conform to established technical standards and accepted engineering practices, such as the Uniform Building Code.
2. Any construction inspections required by other agencies are the responsibility of the holder. Copies of completed inspections shall be provided to the District Ranger, either as they occur or as part of the final as-built plan. Inspection information shall become a permanent part of the holder's special-use file.
3. Corrective work required as a result of Forest Service or other agency inspections shall be completed by the date specified in the inspection report to the satisfaction of the inspecting official.
4. A final set of as-built plans shall be submitted to the District Ranger within 90 days of acceptance of a structure (if the construction was contracted) or of its completion date (if the construction was not contracted).

JOHNSTONE PEAK COMMUNICATIONS SITE MANAGEMENT PLAN**D. New or Remodeled or Expanded Buildings**

1. Any new buildings shall be designed to accommodate multiple users and shall be consistent with a site-specific environmental analysis conducted at the time of the proposal.
2. All construction must be designed to optimize the use of available space. New replacement buildings will be a minimum of 200 square feet. Smaller buildings may be approved only after it is determined that topography or other site conditions will not accommodate the minimum size.
3. Facility owners and facility managers are encouraged to construct the interior of their buildings in a modular fashion, so that they can:
 - a. Sublease sections to others;
 - b. Provide tenants and customers with internal separation and security;
 - c. Reduce physical interference; and
 - d. Increase management effectiveness.
4. The following materials are approved for construction of new buildings:
 - a. Floors: Concrete slab with drainage.
 - b. Walls: Concrete block, metal, or pre-fabricated concrete.
 - c. Roofs: Concrete, metal (if painted to eliminate shiny surfaces), or other fireproof material approved by the Forest Service. Proposals for wooden roofs will not be approved.
 - d. Partitions: Fire resistant material, such as reinforced concrete or properly grounded expanded metal.
 - e. Color: Color used on all exterior building surfaces must have prior written approval of the authorized officer. The goal of color selection is to make buildings as inconspicuous as possible when viewed from a distance. The intent is to reduce or eliminate glare from reflective and/or illuminated surfaces such as windowpanes, sheeting and reflective paints. Non-reflective, Forest Service approved colors shall be used on equipment buildings. The color for Johnstone Peak Communications Site exterior buildings shall be Sherwin Williams Superpaint exterior flat latex, Western Reserve Beige TWT SW2052 or equivalent.

JOHNSTONE PEAK COMMUNICATIONS SITE MANAGEMENT PLAN

5. Building entry lights must:
 - a. Only light the immediate area in the vicinity of the door;
 - b. Be motion-activated and have a limited time duration of 3 to 5 minutes; and
 - c. Have a shielded beam that is pointed at the building door.

Requests for all-night (dusk-to-dawn) lighting or entry lighting that would be visible from outside of the site will not be approved.

E. New or Remodeled/Expanded Towers

1. All construction, modification, and expansion of towers shall have the prior written approval of the authorized officer.
2. It is the applicant and holder's responsibility to ensure that new, modified, or expanded towers will not unduly interfere electronically or physically with any existing equipment at the site. Towers shall be spaced so as to prevent ground level radiation and interference problems. Compliance with these requirements shall be demonstrated in writing to the authorized officer prior to issuance of a lease, permit, or amendment.
3. All new towers shall comply with current structural and safety specifications and design standards, including safety-climbing devices. Towers should be as narrow and "open" as safety and structural integrity allow. New towers should be designed using maximum wind, snow, and tower loading anticipated for the site. Towers at Johnstone Peak will be designed to withstand loads exerted 0-100 feet above ground at a minimum basic wind speed of 99 miles per hour with no ice and at 100-500 feet above ground, 122 miles per hour plus 2" of radial ice on each structure member.
4. All new towers (including antennas) shall not exceed 120 feet. All new towers shall be self-supporting.
5. All towers shall be left unpainted if they are made of dull, galvanized steel. Paint is required only if the tower has a shiny or reflective surface. Non-reflective, Forest Service approved dark gray to green colors will be approved unless the FAA requires red and white tower striping.
6. No lights, beacons, or strobes shall be allowed on new towers unless specifically required by the FCC/FAA.

VIII. GENERAL OPERATION AND MAINTENANCE**A. Special Environmental and/or Biological Considerations**

JOHNSTONE PEAK COMMUNICATIONS SITE MANAGEMENT PLAN

Discouraging Condor/Raptor Use at Communications Sites

Condors naturally seek high points to roost. In order to fly they require favorable winds and perches to help search for food using their keen vision. Communication sites offer elevated peaks with the added attraction of multiple landing perches. When they roost at these sites, their curiosity can lead to hazards to the birds and damage to the facilities. Condors may be harmed by perching in locations where concentrated radio frequencies occur, such as near antennas or in direct line with security fences or support facility rooflines. Condors will pull and peck at any loose wire or soft object, such as insulation, rubber, or weather stripping. They may also become entangled in wires or towers, or harmed in other ways. Possible solutions may include the five items listed below, and after a site-specific survey, the Forest Service may require additional measures.

1. Place anti-perching devices along open horizontal surfaces at tower tops, protruding arms, along the edge of flat roof tops or roof ridges, along a quarter-arch on the front edge of large drum micro-wave dishes, and along horizontal coverings or tracks holding wave-guides.
2. Immediately remove trash and garbage from the site.
3. Secure all loose wires.
4. Cover all insulation or other soft materials.
5. Cover any spill retention or catchment basins or other structures that may collect and hold water or other liquids condors may attempt to drink.

In accordance with the March 1, 2000, Settlement Agreement between the Center for Biological Diversity and the Forest Service, the following corrective/mitigative measures must be completed at Sunset Ridge and all other communications sites on the Angeles National Forest by December 31, 2006:

1. All radiating parabolic dish antennas must be equipped with radome (cover) to prevent perching on the feedhorn within the near-radiating field.
2. New radomes or replacement radomes when broken or torn shall be a non-reflective, dark earth-tone color. The color should be gray or equivalent (non-white).
3. Fences or other structures associated with the microwave antenna shall be at a height where any perching raptor/condor will not be in direct line with the radiating beam.

JOHNSTONE PEAK COMMUNICATIONS SITE MANAGEMENT PLAN

B. Wiring and Grounding

1. All equipment shall be installed in metal cabinets or open frame equipment racks that are grounded and shielded. Grounding is to be installed in accordance with manufacturer's recommendations and accepted industry standards.
2. All electrical wiring and grounding shall meet the National Electrical Code and applicable State codes. All permanent wiring shall be installed in metallic conduit. Surge protection shall be installed on all power distribution panels.
3. Every effort shall be made to protect the equipment from lightning damage. Lightning protectors should be used on all coaxial cable connections to equipment enclosures. Gas gap and MOV protectors should be used on all control, audio, and power lines.
4. Each building shall have its own separate grounding system for all users in that structure. Wherever practical, interconnection of individual grids and/or the simultaneous placement of large sized copper ground wire with any new grounding systems that are buried on the site shall be encouraged.
5. Grounding shall be installed in accordance with accepted practices and standards, such as Motorola specification R-26 and the NEC. Grounding using Benton tic clays is currently the only approved method for chemical grounding. Other types of chemical grounding shall require completion of NEPA documentation by the applicant prior to consideration for approval by the authorized officer.

C. Communications Equipment

1. Equipment Ownership

All equipment shall be labeled with:

 - a. The owner's name;
 - b. Applicable transmitter frequencies;
 - c. The applicable FCC license or NTIA authorization;
 - d. Transmitting power outputs; and
 - e. A current 24-hour telephone contact number.
2. Transmitting Equipment

JOHNSTONE PEAK COMMUNICATIONS SITE MANAGEMENT PLAN

All transmitters shall have protective devices built into them or externally installed to prevent interference with other uses. All transmitters shall meet FCC licensing requirements.

The re-radiation of intercepted signals from any unprotected transmitter and its associated antenna system shall be prevented by the use of appropriate filters, typically bandpass filters, circulators, and/or harmonic filters (wide band and narrow band broadcast transmitters).

The direct radiation of out-of-band emissions (noise or spurious harmonics) shall be reduced to a level such that it may not be identified as a source of interference as defined in FCC Regulations (47 CFR 90.209(e)). If site noise (electromagnetic noise) becomes an issue, noise threshold limits shall be established, and amended into the Site Plan.

All transmitters not in immediate use and not specifically designated as standby equipment shall be removed. Loads connected to circulators shall be capable of dissipating the total power output of the transmitter.

3. Receiving Equipment

A bandpass device, such as a cavity or crystal filter, is recommended at the input of all receiving devices. Cavity filters or other protective devices may be used at receiver inputs to reduce interference.

Where duplexing is used, a notch-type device should be avoided. In situations where a notch-type device is used, a bandpass filter shall be used on both the receiver and transmitter.

4. Towers

Generally only one tower is authorized for each facility owner. Facility owners and facility managers may obtain permission to construct a second tower demonstrating that their existing tower is completely filled and full use has been made of combining systems.

5. Antennas

- a. Microwave (dish) antennas and other than ground-mounted satellite dishes shall not exceed 10 feet in diameter and for safety no lower than 15' above ground
- b. All antennas shall meet all OSHA safety standards. If an antenna is operating in excess of FCC public or occupations standards, steps will be taken, such as fencing, posting of signs, relocation, lowering power levels, within 24 hours to bring it into compliance. Ground

JOHNSTONE PEAK COMMUNICATIONS SITE MANAGEMENT PLAN

measurements of RFR levels will be taken before mitigation measures are implemented.

- c. Colors for dish antennas or covers shall be pre-approved by the authorized officer. White dish antennas and covers will not be approved. Existing white dishes and covers shall be repainted or replaced as repairs or replacement become necessary.
- d. Antennas shall be treated for low to non-reflectance.
- e. Low powered transmit and receive antennas may be located low on the tower or on the ground.

6. Interference

The responsibility for correcting interference problems lies with the holder of the communications site authorization for the facility, the user causing the interference, and the affected parties. Generally, the first users at a site have seniority with respect to resolution of interference complaints. Senior users have an obligation to maintain their equipment to industry standards, to operate their systems in accordance with the terms of both the FCC license and NTIA/IRAC frequency authorization, and to comply with the Forest Service communications site authorization. New users at a site shall correct, at their expense, interference problems that they create. They shall cease operation of the suspect equipment until the problem is corrected. If interference problems cannot be resolved or corrected within a reasonable time, the new use that is causing the interference may be terminated and the equipment removed.

The Forest Service does not have any responsibility for correcting interference problems, but can act as a mediator to help all affected parties. Interference problems should be coordinated with the FCC or NTIA, as appropriate.

Interference with law enforcement and emergency communications shall be corrected immediately. Operation of equipment covered by this site plan shall not interfere with Federal Government radio or electronic operations already in existence on National Forest System lands within two miles of the Johnstone Peak Communications Site. The user causing this interference shall at their own expense take all actions necessary to prevent or eliminate the interference. If they do not eliminate the interference within ten days after receipt of notice from the Forest Service to do so, this use will be terminated.

If electromagnetic noise becomes an issue, noise thresholds shall be established and incorporated as an amendment to this site plan.

JOHNSTONE PEAK COMMUNICATIONS SITE MANAGEMENT PLAN

D. Cables and Transmission Lines

All new cabling shall be jacketed and shielded and shall either be flexible or semi-rigid. Existing substandard cables shall be upgraded as repairs or replacement become necessary. Cables shall be properly installed, strapped, and fastened down. Cable runs should be consistent with applicable engineering standards when attaching cables onto a tower.

All transmission lines (wave guides) shall be supported in accordance with manufacturer's specifications. Unjacketed transmission lines or unjacketed cables of any type are prohibited. No transmission lines shall be left exterminated.

Double-shielded braided or solid-shielded cable shall be used. No RG-8 cable is permitted. No connector-type adapters shall be used on transmission lines. Only correct connectors that will mate to connected devices may be used.

Conduits shall be shared when they service common areas and shall be buried where possible.

E. Radiation

All communications uses shall meet ANSI, FCC, and Forest Service regulations, policy, guidelines, and standards concerning radiation limitations.

Monitoring radiation levels at the site is the responsibility of all site users and shall occur at intervals to comply with FCC regulations and guidelines. A copy of the monitoring report shall be provided to the Forest Service within 30 days of its completion.

Onsite RFR measurements shall be taken using appropriate equipment that can adequately measure levels both on the tower and on the ground before mitigation measures related to RFR are implemented.

Security fences with RFR notice signs are required around areas that exceed public use levels. All fencing location and design shall be pre-approved by the Forest Service.

Warning signs shall be in English and Spanish and comply with ANSI C95.2 color, symbol, and content conventions. Contact information, including name and telephone number will also be included on warning signs.

Any identified RFR problems that are, or could be, a human health hazard shall be corrected within 24 hours after measurement tests have been completed, or the equipment involved shall be removed from the site by the site user. Any ground disturbance associated with correction of RFR problems or removal of equipment causing the problem must have prior written approval of the authorized officer.

JOHNSTONE PEAK COMMUNICATIONS SITE MANAGEMENT PLAN

F. Utilities

Site users shall pay for the cost to install and maintain utilities, including any resource surveys and reports needed for environmental compliance. For visual reasons, new overhead utility poles are not authorized.

1. Commercial Electrical Power

Commercial electrical power is supplied by Southern California Edison Company (SCE). Installation of powerlines will be authorized by permit or permit amendment to SCE. Powerlines placed underground, wherever possible, at least 36" deep, and will be posted. All wiring shall conform to the National Electrical Safety Code. Every effort should be made to protect equipment from lightning damage.

2. Telephone Service

Verizon Company provides hard wire telephone service and fiber optic cable connections for video and audio signal transmissions. Phone lines/cables will be buried a minimum of 18" deep and will be posted.

3. Fuel Storage

Fuel storage facilities on this site must be designed, installed and maintained according to applicable federal, State and local laws and ordinances.

G. Sanitary Facilities

No sanitation facilities exist at this site. If needed, any new sanitary facilities shall be pre-approved by the Forest Service. If it is determined by the authorized officer that the user needs such facilities, they will be provided by the applicant/holder in a manner and location satisfactory to the authorized officer and requirements of the local health department.

H. Security and Law Enforcement

The Los Angeles County Sheriff's Department is the principle law enforcement agency for the area in which the Johnstone Peak Communications Site is located. Generally, the County Sheriff's Department is responsible for civil and criminal law enforcement. Generally, the Forest Service is responsible for enforcing Federal laws applicable to NFS lands, such as resource protection.

Patrol and policing for security purposes is the holder's responsibility. Additional fencing for security purposes must have prior written approval from the authorized officer.

JOHNSTONE PEAK COMMUNICATIONS SITE MANAGEMENT PLAN

1. Fences

- a. To reduce visual clutter and to efficiently utilize existing space, fencing around a group of buildings shall be encouraged.
- b. All fences shall meet health and safety requirements.
- c. All fence locations and design require Forest Service pre-approval. The standard fencing type will be block or chain-link (cyclone).
- d. The standard fence height shall be eight feet.
- e. Fencing shall be designed and of a type to minimize interference.
- f. Fences shall be signed with RFR notices if RFR levels are above acceptable public levels established by the FCC.

2. Gates

Gates shall be adequate for Forest Service and County Fire Department access needs.

3. Buildings

All buildings will be identified by a minimum six-inch (6") high number clearly visible from roads and/or driveways. This number along with a 24-hour contact phone number(s) will be posted on the main door(s) into the building and on fence gates where appropriate. The numbering scheme in APPENDIX X - B will be used.

I. Site Maintenance

The objectives of site maintenance are to present a clean, neat, and orderly appearance at the site and to have all the authorized improvements at the site be safe for workers and the public. All users are responsible for maintaining the overall appearance of the site.

Miscellaneous debris remaining after any construction or installation, removal or modification of equipment is not only a hazard but can cause interference or intermodulation problems. All loose debris must be removed from the site with 30 days after construction, reconstruction, or other activities. In particular, all loose wire or metal objects shall be removed from the site. The users of the site shall remove graffiti within ten working days of finding it. If graffiti is on natural features, such as rocks and trees, the graffiti will be removed in a method approved by the authorized officer.

JOHNSTONE PEAK COMMUNICATIONS SITE MANAGEMENT PLAN

Holders may not leave or dispose of trash, garbage, or cut brush on NFS lands. No outside trash or litter containers are allowed. Site users shall remove all trash and litter from the site as it is produced. Policing of litter in common areas, such as the areas between buildings and developed sites, is the shared responsibility of those holders bordering these areas.

Peeling paint on buildings and towers shall be re-painted within thirty days of discovery.

J. Inspections

Unless waived in writing by the authorized officer, the holder shall have conducted annually a certified inspection of the facilities and equipment covered by the authorization. The inspection shall include a technical review that should ensure that all authorized equipment is operating in accordance with requirement of the this site plan, the applicable FCC license or NTIA authorization, ANSI standards, and the manufacturer's specifications. In addition, the inspection should ensure that the authorized equipment is secure, free of rust, properly grounded, and otherwise properly operated and maintained. A copy of the inspection report, certified by a telecommunication specialist, shall be provided to the authorized officer within 30 days of completion of the inspection. The Forest Service may also conduct periodic reviews to monitor for authorization compliance.

K. Fire Prevention and Hazard Reduction Requirements

Facility owners and facility managers will be required to maintain a minimum of thirty-foot clearance to mineral soil around their buildings and a minimum ten-foot clearance around propane tanks year around. Threatened, endangered, or sensitive plant species shall remain within the minimum clearance areas.

Smoking is prohibited while walking in flammable vegetation. The roof structure shall be kept clear of leaves, twigs, and other debris at all times. No explosive shall be stored at the site. Flammable materials shall be stored in conformance with the requirements of local fire regulations. Flammables shall be placed in closed containers and stored away from sources of ignition and combustible materials. If flammables are stored within a building, the building shall be locked, properly signed, and ventilated.

Maintain approved spark arresters on all internal combustion engines. At least one (1) U.L. rated 40 B: C dry chemical fire extinguisher is required inside each building. Prior to each June, fire extinguisher(s) shall be inspected and refilled, if necessary. Any fire shall be immediately by phoning "911" or reported to the Angeles National Forest Emergency Operations Center at (661) 723-2703.

JOHNSTONE PEAK COMMUNICATIONS SITE MANAGEMENT PLAN

Periodic fire prevention inspections will be made by Forest Service officers. They will call to your attention any lack of compliance with the above regulations, plus any other existing hazards. Compliance with these inspections is required within the time limits specified. For detailed information, refer to Appendix E "Fire Plan".

All fire protection requirements shall be met prior to June 1st of each year, unless otherwise agreed to, and maintained throughout the fire season.

L. Access

1. Roads

The site is accessed via the Blue Bird Motorway, 1N15, the Johnstone Peak Road, 1N17, and the Sycamore Canyon road. A Forest Service "junior key" is available to the gates from Sycamore Canyon or Johnstone Peak, but separate keys and or permission may be required to access the site through Blue Bird.

The site is closed to the general public by being within the San Dimas Experimental Forest. Gates are to be kept closed. The Forest Service currently maintains Forest Development Roads consistent with overall management needs, and as finances permit. Blading and drainage maintenance once per year is sufficient for Forest Service needs. In order to perform additional maintenance, it will be necessary to collect payment from the permittees under a road maintenance agreement.

Holders who damage the access road, or any of its associated improvements, such as ditches, culverts, roadside vegetation, signs, and underground utilities and facilities, shall be required to repair the road to conditions equal to or superior to those prior to any damage or disturbance.

2. Internal Roads and Parking Areas

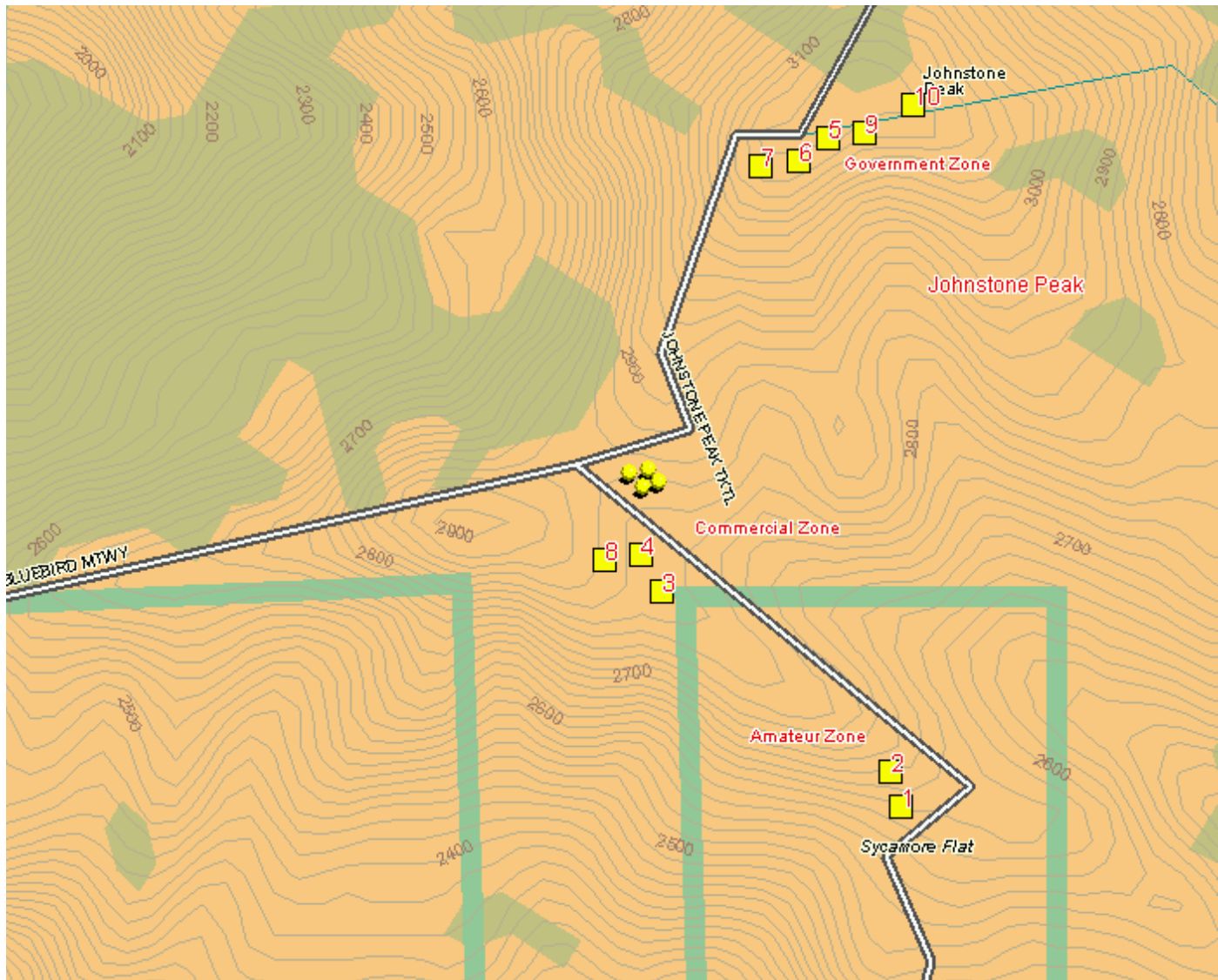
Internal roads and parking areas within the communications site are the responsibility of the site users. Interior roads and parking areas shall be planned and approved by the authorized officer in conjunction with establishment of new facilities. Interior roads shall be maintained so as to allow only one entrance to the site. The intent is to discourage off-road vehicle use in and around the site.

3. Road Closures

Forest Service roads are subject to periodic closures to entry during periods of extreme fire danger, inclement weather, or wetness. Site users may access the site during these closures if they have prior, written approval from the authorized officer.

JOHNSTONE PEAK COMMUNICATIONS SITE MANAGEMENT PLAN**IX. SITE ASSOCIATION AND ADVISORY GROUP**

Site Associations and Advisory Groups are encouraged. If desirable in the future, the user association would be responsible for maintenance and upkeep of internal roads and parking areas. The user association would also be responsible for ensuring cooperation among users for tower access. A site safety officer would be identified within the user association. The user association would be expected to develop an RFR plan and agreement and recommend measures to reduce interference issues. The goal of the user association would also be to maximize the effective use of the site and to represent all site users when dealing with the Angeles National Forests on matters relating to site administration. The association would be able to work in cooperation with the Forest Service to identify problems or opportunities and make recommendations to the Forest Service for any changes in management strategies for the site. The association could also provide input to the Forest Service regarding the addition of equipment and facilities at the site. While the advice and recommendations of the association would not be binding on the Forest Service, the Forest Service could use the input for administration of the site. The Forest Service would be a member of the user association and would help develop the association charter.

JOHNSTONE PEAK COMMUNICATIONS SITE MANAGEMENT PLAN**X. APPENDICIES****APPENDIX A – Site Map – JOHNSTONE PEAK**

JOHNSTONE PEAK COMMUNICATIONS SITE MANAGEMENT PLAN

APPENDIX B – Authorized Facilities

JOHNSTONE PEAK – AUTHORIZED FACILITY TABLE

Johnstone Peak Communications				
Facility/Users	Authorization #	Owner (O) Customer (C) Tenant (T) Exempt (E)	Use	Population Served
# 1 - LA Repeaters	SGR601101	O	Amateur	Zone 1
# 2 - S Johnstone Amateur Radio Council	SGR455301	O	Amateur	Zone 1
# 3 - Spectrasite	SGR415502	O	FAM	Zone 1
# 4 - LA SMSA Lmtl	SGR600902	O	FAM	Zone 1
# 8 – City of Glendora	SGR735001	O	CTV	Zone 1
# 5 - Forest Service	SGR-----	E	PMRS	Zone 1
# 6 - Calif Highway Patrol	SGR102004	E	PMRS	Zone 1
# 7 - Forest Service	SGR-----	E	PMRS	Zone 1
# 9 - LA County	SGR100703	E	PMRS	Zone 1

JOHNSTONE PEAK COMMUNICATIONS SITE MANAGEMENT PLAN

# 10 - So Calif Edison	SGR100703	O	PMRS	Zone 1		

JOHNSTONE PEAK COMMUNICATIONS SITE MANAGEMENT PLAN

APPENDIX C – Facility Photographs

Site Gallery



Facility 1



Facility 1

JOHNSTONE PEAK COMMUNICATIONS SITE MANAGEMENT PLAN



Facility 1



Facility 2

JOHNSTONE PEAK COMMUNICATIONS SITE MANAGEMENT PLAN



Facility 2



Facility 3

JOHNSTONE PEAK COMMUNICATIONS SITE MANAGEMENT PLAN



Facility 4



Facility 4

JOHNSTONE PEAK COMMUNICATIONS SITE MANAGEMENT PLAN



Facility 4



Facility 5

JOHNSTONE PEAK COMMUNICATIONS SITE MANAGEMENT PLAN



Facility 6



Facility 6

JOHNSTONE PEAK COMMUNICATIONS SITE MANAGEMENT PLAN



Facility 6



Facility 7

JOHNSTONE PEAK COMMUNICATIONS SITE MANAGEMENT PLAN



Facility 7



Facility 8

JOHNSTONE PEAK COMMUNICATIONS SITE MANAGEMENT PLAN



Facility 8



Facility 8

JOHNSTONE PEAK COMMUNICATIONS SITE MANAGEMENT PLAN



Facility 8



Facility 9

JOHNSTONE PEAK COMMUNICATIONS SITE MANAGEMENT PLAN



Facility 9



Facility 9

JOHNSTONE PEAK COMMUNICATIONS SITE MANAGEMENT PLAN



Facility 9



Facility 10

JOHNSTONE PEAK COMMUNICATIONS SITE MANAGEMENT PLAN



Facility 10



Facility 10

JOHNSTONE PEAK COMMUNICATIONS SITE MANAGEMENT PLAN

APPENDIX D – Inspection Checklist

Johnstone Peak Annual Technical Inspection”

Date Inspected: _____ Time Inspection: _____

Permit Holder: _____ Authorization # _____

Site Technician: _____ Phone # _____

Number of Transmitters _____ License Posted _____

Please mark the following Items as Acceptable (A) or Unacceptable (U).

Electrical Wiring ----- (A) (U) Grounding ----- (A) (U)

Equipment Installation ----- (A) (U) Housekeeping ----- (A) (U)

Building Repair ----- (A) (U) Tower Repair ----- (A) (U)

Please mark the following Items as Yes (Y) or NO (N) or (NA)

Isolators ----- (Y) (N) (NA) Circulators ----- (Y) (N) (NA)

Cavities ----- (Y) (N) (NA) Terminators ----- (Y) (N) (NA)

Filters ----- (Y) (N) (NA) Lightning Protection ----- (Y) (N) (NA)

Comments:

Recommended Corrective Action:

Required Corrective Action To Be Taken:

Committee Representatives:

Forest Service Representatives:

Please make the required corrective action within the next 120 days.

Please make a written report of corrective action taken and submit to the FS... If you should have any questions, please call the Forest Service office.

JOHNSTONE PEAK COMMUNICATIONS SITE MANAGEMENT PLAN**APPENDIX E – Fire Plan****1. SCOPE**

The provisions set forth below outline the channels of responsibility for fire prevention and suppression activities and establish an attack procedure for fires within the special use site. The authorized area is delineated by a map in the permit/lease. The provisions set forth below also specify conditions under which activities under authorization will be curtailed or shut down. See Section 5, Reporting All Wild Fires below, should a fire occur.

2. RESPONSIBILITIES**A. Holder**

- (1) Shall abide by the requirements of this Fire Plan.
- (2) Shall take all steps necessary to prevent his/her employees, subcontractors and their employees from setting fires, and shall be responsible for preventing the escape of fires, and shall make every attempt to extinguish all such fires which may escape.

B. Forest Service will monitor for Holder's compliance with this Plan.

3. TOOLS AND EQUIPMENT

The Holder shall comply with the following requirements:

- A. Shall equip all diesel and/or gasoline-operated engines, both stationary and mobile, with spark arresters that meet Forest Service standards set forth in the National Coordinating Group publication for Multiposition Small Engines, #430-4, or General Purpose and Locomotive, #430-2. Spark arresters are not required on equipment powered by exhaust-driven turbo-charged engines or motor vehicles equipped with a maintained muffler as defined in California Public Resources Code (CPRC), Section 4442 and 4443.
- B. Shall furnish and have available within each building hand tool and/or equipment as follows (CPRC 4427 and 4431) for emergency use:
 - (1) One shovel, one axe (or pulaski) and a fully charged fire extinguisher U.L. rated at 4 B:C or more.
 - (2) One shovel and one chemical pressurized fire extinguisher (fully charged) for each gasoline-powered tool, including but not restricted to chain saws, soil augers, weed whips, etc. Fire extinguishers shall be of the type and size set forth in the California Public Resources Code Section 4431.

JOHNSTONE PEAK COMMUNICATIONS SITE MANAGEMENT PLAN

- C. All tools and equipment required in A. and B. above shall be in good workable condition. Shovels shall be size "O" or larger and be no less than 46 inches in overall length.

4. GENERAL

- A. State Law. The Holder shall comply with all applicable laws of the State of California. In particular, see California Public Resource Codes 4291, 4423, 4427, 4431 (attached).

County Law. The Holder must abide by county laws concerning hazard reduction around buildings and all other improvements at the electronic site.

- B. Permits Required. The Holder must secure a special written permit from the District Ranger or Designated Representative before engaging in any of the activities listed below.

- (1) Burning Permits. (Issued by the Forest Service)

- (2) Welding and Cutting. (Issued by Forest Service)

- (3) Construction. (Issued by Forest Service and/or County)

- C. Smoking and Fire Rules. Smoking shall not be permitted except in a barren area, in an area cleared to mineral soil at least three feet in diameter (CPRC 4423.4) or within vehicles or buildings, especially during fire season. Holder shall post signs regarding smoking and fire rules in conspicuous places for all employees to see. Holder shall require compliance with these rules. Under no circumstances shall smoking be permitted during fire season while employees are operating light or heavy equipment, or walking or working in grass and woodlands.

- D. Storage and Parking Areas. Equipment service areas, parking areas, and gas and oil storage areas shall be cleared of all inflammable material for a radius of at least 50 feet. Small mobile or stationary engine (e.g. generator, air compressor, etc.) sites shall be cleared of inflammable material for a radius of at least 15 feet from such engine. Areas of the type described above must be approved in writing by the Authorized Officer.

- E. Welding. A welding permit is required for all welding and cutting operations. Holder shall confine welding activity to cleared area having a minimum radius of ten feet measured from place of welding. All terms of the welding permit must be met.

- F. Oil Filter and Glass Jugs. Holder shall remove from National Forest lands all oily rags and used oil filters. Holder shall prohibit use of glass bottles and jugs at the site during all operations.

JOHNSTONE PEAK COMMUNICATIONS SITE MANAGEMENT PLAN

- G. Communications. When Holder, or any of its contractors, is working at the site, they shall furnish a serviceable telephone, radio-telephone, or radio system connecting site with Holder's headquarters. When such headquarters is at a location which makes communication to it clearly impractical, the Forest Service will accept a reasonable alternative location. The communication systems shall provide prompt and reliable communications between Holder's headquarters (or above stated alternative) and Forest Service via commercial telephone or radio system.

5. REPORTING ALL WILD FIRES

Holder and/or his/her employees shall report all fires to 911 or the Angeles NF Emergency Operations Center at (661) 723-2703.

6. CALIFORNIA PUBLIC RESOURCE CODES

- A. PRC 4291 states: Any person that owns, leases, controls, operates, or maintains any building or structure in, upon, or adjoining any mountainous area or forest-covered lands, brush-covered lands, or grass-covered lands, or any land which is covered with flammable material, shall at all times do all of the following:
- (1) Maintain around and adjacent to such building or structure a firebreak made by removing and clearing away, for a distance of not less than 30 feet on each side thereof or to the property line, whichever is nearer, all flammable vegetation or other combustible growth. This subdivision does not apply to single specimens of trees, ornamental shrubbery, or similar plants which are used as ground cover, if they do not form a means of rapidly transmitting fire from the native growth to any building or structure.
 - (2) Maintain around and adjacent to any such building or structure additional fire protection or firebreak made by removing all brush, flammable vegetation, or combustible growth which is located from 30 feet to 100 feet from such building or structure or to the property line, whichever is nearer, as may be required by the director if he finds that, because of extra hazardous conditions, a firebreak of only 30 feet around such building or structure is not sufficient to provide reasonable fire safety. Grass and other vegetation located more than 30 feet from such building or structure and less than 18 inches in height above the ground may be maintained where necessary to stabilize the soil and prevent erosion.
 - (3) Remove that portion of any tree which extends within 10 feet of the outlet of any chimney or stovepipe.

JOHNSTONE PEAK COMMUNICATIONS SITE MANAGEMENT PLAN

- (4) Maintain any tree adjacent to or overhanging any building free of dead or dying wood.
 - (5) Maintain the roof of any structure free of leaves, needles, or other dead vegetative growth.
 - (6) Provide and maintain at all times a screen over the outlet of every chimney or stovepipe that is attached to any fire place, stove, or other device that burns any solid or liquid fuel. The screen shall be constructed of nonflammable material with openings of not more than one-half inch in size.
- B. PRC 4423 states: A person shall not burn any brush, stumps, logs, fallen timber, fallows, slash, grass-covered land, brush-covered land, forest-covered land, or other flammable material, in any state responsibility area, area receiving fire protection by the department by contract, or upon federal lands administered by the United States Department of Agriculture or Department of the Interior, unless the person has a written permit from the department or its duly authorized representative or the authorized federal officer on federal lands administered by the United States Department of Agriculture or of the Interior and in strict accordance with the terms of the permit:
 - (1) At any time in Zone B between May 1st and the date the director declares, by proclamation that the hazardous fire conditions have abated for that year or at any other time in Zone B during any year when the director has declared, by proclamation that unusual fire hazard conditions exist in the area.
 - (2) Zone A requires a permit year round and includes Mono, Inyo, San Bernardino, Santa Barbara, Ventura, Los Angeles, Orange, Riverside, San Diego, and Imperial Counties.
- C. PRC 4427 states: During any time of the year when burning permits are required in an area pursuant to this article, no person shall use or operate any motor, engine, boiler, stationary equipment, welding equipment, cutting torches, tar pots, or grinding devices from which a spark, fire, or flame may originate, which is located on or near any forest-covered land, brush-covered land, or grass-covered land, without doing both of the following:
 - (1) First clearing away all flammable material, including snags, from the area around such operation for a distance of 10 feet.
 - (2) Maintain one serviceable round point shovel with an overall length of not less than forty-six (46) inches and one backpack pump water-type fire extinguisher fully equipped and ready for use at the immediate area during the operation.

JOHNSTONE PEAK COMMUNICATIONS SITE MANAGEMENT PLAN

This section does not apply to portable powersaws and other portable tools powered by a gasoline-fueled internal combustion engine. (See Sec. 4431 re powersaws).

- D. PRC 4431 states: During any time of the year when burning permits are required in an area pursuant to this article, no person shall use or operate or cause to be operated in the area any portable saw, auger, drill, tamper, or other portable tool powered by gasoline-fueled internal combustion engine on or near any forest-covered land, within 25 feet of any flammable material, without providing and maintaining at the immediate locations of use or operation of the saw or tool, for firefighting purposes one serviceable round point shovel, with an overall length of not less than 46 inches, or one serviceable fire extinguisher. The Director of Forestry shall by administrative regulation specify the type and size of fire extinguisher necessary to provide at least minimum assurance of controlling fire caused by use of portable power tools under various climatic and fuel conditions. The required fire tools shall at no time be farther from the point of operation of the powersaw or tool than 25 feet with unrestricted access for the operator from the point of operation.
- E. PRC 4446 states: Every person shall exercise reasonable care in the disposal of flammable material so that the material does not cause the inception of or spread of uncontrolled fire. A person shall not burn any flammable material in any incinerator within any state responsibility area, area receiving fire protection by the State Forester by contract, or upon federal lands administered by the United States Department of Agriculture or Department of the Interior, unless the following minimum requirements are complied with:
 - (1) The area within 10 feet of the exterior of the incinerator is maintained free and clear of all flammable material and vegetation.
 - (2) A screen constructed of a nonflammable material, with no greater than ¼ inch mesh, or metal doors, close or cover each opening in the exterior of an incinerator to prevent the escape of flames, sparks, ashes or other burning material which might cause an uncontrolled fire.

NO INCINERATORS ARE PERMITTED AT JOHNSTONE PEAK